

# DELTA PATIO & ROOFING RANGE

## ROOFING ACCESSORIES

### Flashing and Rainwater Goods

To ensure the highest standards Delta Panels manufacture in-house a wide range of flashings and rainwater accessories.

Please refer to our Flashings - Recommended Installations Manual to see the extensive range of standard flashings we provide. We can also supply one-off designs to suit any application.

A range of gutter profiles are also available, with a selection of downpipes to suit.

All flashings and gutters are available in DeltaMax.

Flashings unless otherwise noted are made from 0.55mm steel.



### Roofing Accessories

Delta Panels offers a one-stop-shop for the complete range of roofing accessories, including foam infill strips, butyl rubber adhesive tape and sealants.



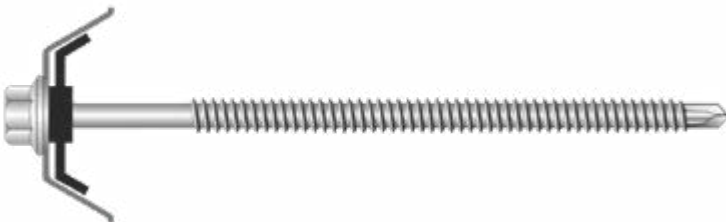
### Fasteners

Please refer to the screw selection table in the Handling and Installation Manual to select the correct fastener for the panel type and thickness. For any projects that must comply with Factory Mutual certifications, please refer to the Factory Mutual Approvals web page which lists the approved fastener system specific to each panel type.

#### Screw Types

##### Main Fasteners with Cyclone Plate and Washer

Metal Tek - Fixing | **Fixing into Steel Beams up to 12.5mm**



T17 - Fixing | **Fixing into Timber Beams**



##### Secondary Fasteners

**Tek M13 x 25mm**



**Tek M10 x 16mm**



**Dome Rivet 73 AS 4.3**



# DELTA PATIO & ROOFING RANGE

## Screw Selection Tables



### DeltaTrim™

Minimum Class 3 - must be HEX Head	Steel Beam	Timber Beam	Minimum Class 3 - must be HEX Head	Steel Beam	Timber Beam
50mm	135mm	125mm	150mm	230mm	230mm
75mm	150mm	150mm	175mm	260mm	265mm
100mm	175mm	175mm	200mm	260mm	300mm
125mm	200mm	200mm			

### DeltaOrb™

Minimum Class 3 - must be HEX Head	Steel Beam	Timber Beam	Minimum Class 3 - must be HEX Head	Steel Beam	Timber Beam
50mm	115mm	125mm	150mm	200mm	230mm
75mm	135mm	150mm	175mm	230mm	265mm
100mm	150mm	175mm	200mm	260mm	300mm
125mm	175mm	200mm			

### DeltaCorroCorro™

Minimum Class 3 - must be HEX Head	Steel Beam	Timber Beam	Minimum Class 3 - must be HEX Head	Steel Beam	Timber Beam
75mm	115mm	125mm	175mm	200mm	230mm
100mm	135mm	150mm	200mm	230mm	265mm
125mm	150mm	175mm	225mm	260mm	265mm
150mm	175mm	200mm	250mm	300mm	300mm

### DeltaTrimTrim™

Minimum Class 3 - must be HEX Head	Steel Beam	Timber Beam	Minimum Class 3 - must be HEX Head	Steel Beam	Timber Beam
75mm	200mm	200mm	150mm	260mm	265mm
100mm	230mm	230mm	175mm	300mm	300mm
125mm	230mm	230mm	200mm	300mm	300mm

### DeltaTrimCorro™

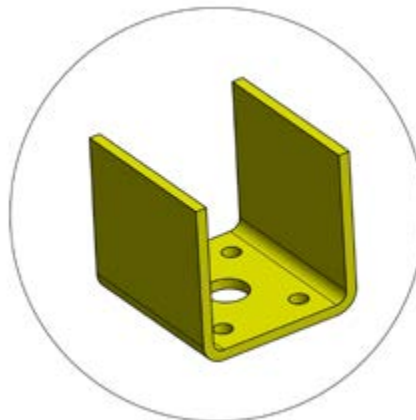
Minimum Class 3 - must be HEX Head	Steel Beam	Timber Beam	Minimum Class 3 - must be HEX Head	Steel Beam	Timber Beam
75mm	175mm	175mm	150mm	260mm	265mm
100mm	200mm	200mm	175mm	300mm	300mm
125mm	230mm	230mm	200mm	300mm	300mm



## POST & BRACKET OPTIONS

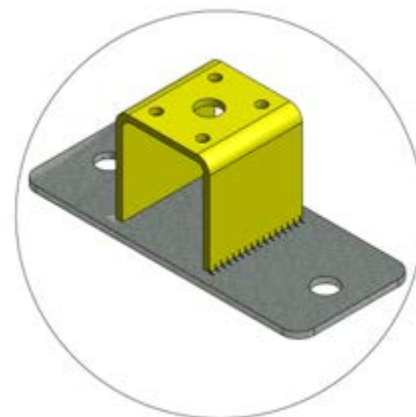
### **Base Plate**

- 1 x G300 4mm thick Internal Bracket
- 1 x M12 Gal Concrete fixing to footing
- 1 x M12 Gal Hex Head Bolt/Nut/Washer post to bracket
- Available in Steel and Aluminium



### **Base Plate**

- 1 x G300 4mm thick Bracket welded to a 4mm CFW base plate
- 1 x M12 Gal Hex Head Bolt/Nut/Washer, post to bracket
- 2 x M12 Gal Concrete fixing to footing
- Available in Steel and Aluminium



### **Post to Beam**

- 2 x M12 Gal Hex Head Bolt/Nut/Washer, beam to post
- 2 x Anti-crush sleeve
- Available in Steel and Aluminium

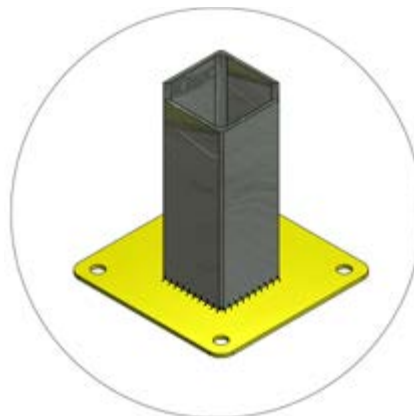




## POST & BRACKET OPTIONS

### **Base Plate**

- 1 x 10mm CFW thick Base Plate with welded G300 4mm thick upright support angles
- 2 x M12 Gal Hex Head Bolt/Nut/Washer, post to bracket
- 4 x M12 Gal Concrete fixing to footing
- Available in Steel and Aluminium



### **Post to Beam**

- 2 x M12 Gal Hex Head Bolt/Nut/Washer, beam to post
- 2 x Anti-crush sleeve
- Available in Steel and Aluminium
- Available in the following lengths
  - 2400mm
  - 3000mm
  - 4500mm
  - 5500mm



### **Foot Plate Cover**

- Foot plate cover to suit both Type 3 & 4, 100mm posts.
- Die-cast aluminium mould
- Powder Coated Finish
- Available in Steel and Aluminium

